

- **Designed to Provide Front-end selectivity in 430.50 MHz**
- **Low-Loss, Coupled-Resonator Quartz Design**
- **Simple External Impedance Matching**
- **Rugged, Hermetic, Low Profile TO-39 Package**

SF430

Absolute Maximum Rating (Ta=25°C)			
Parameter		Rating	Unit
CW RF Power Dissipation	P	+10	dBm
DC Voltage VDC Between Any Two Pins	V_{DC}	± 30	V
Operating Temperature Range	T_A	-10 ~ +60	°C
Storage Temperature Range	T_{stg}	-40 ~ +85	°C

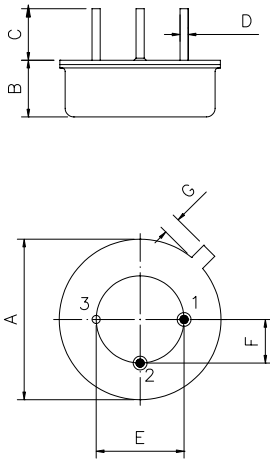
Electronic Characteristics						
Parameter	Sym	Minimum	Typical	Maximum	Unit	
Nominal Frequency (at 25°C) (Center frequency between 3dB point)	f_c	NS	430.50	NS	MHz	
Insertion Loss	IL	-	3.5	5.0	dB	
3dB Passband	BW_3	-	600	900	KHz	
Passband Ripple	$\Delta\alpha$	-	-	± 1.0	dB	
Rejection	at $f_c - 21.4$ MHz (Image)	-	40	50	-	dB
	at $f_c - 10.7$ MHz (LO)	-	20	30	-	dB
	Ultimate	-	-	60	-	dB
Temperature Stability	Operating Temperature Range	T_C	-10	-	+60	°C
	Turnover Temperature	T_O	25	-	55	°C
	Turnover Frequency	f_O	-	f_c	-	MHz
	Frequency Temperature Coefficient	FTC	-	0.032	-	ppm/C ²
Frequency Aging Absolute Value during the First Year	$ fA $	-	-	10	ppm/yr	
DC Insulation Resistance Between any Two Pins	-	1.0	-	-	MΩ	

NS = Not Specified

Notes:

- The frequency f_c is defined as the midpoint between the 3dB frequencies.
- Unless noted otherwise, all measurements are made with the filter installed in the specified test fixture that is connected to a 50Ω test system with VSWR $\leq 1.2:1$. The test fixture L and C are adjusted for minimum insertion loss at the filter center frequency, f_c . Note that insertion loss, bandwidth, and passband shape are dependent on the impedance matching component values and quality.
- Unless noted otherwise, specifications apply over the entire specified operating temperature range.
- Frequency aging is the change in f_c with time and is specified at +65°C or less. Aging may exceed the specification for prolonged temperatures above +65°C. Typically, aging is greatest the first year after manufacture, decreasing in subsequent years.
- Turnover temperature, T_O , is the temperature of maximum (or turnover) frequency, f_O . The nominal frequency at any case temperature, T_C , may be calculated from: $f = f_O [1 - FTC (T_O - T_C)^2]$.
- The specifications of this device are based on the test circuit shown above and subject to change or obsolescence without notice.
- All equipment designs utilizing this product must be approved by the appropriate government agency prior to manufacture or sale.
- Our liability is only assumed for the Surface Acoustic Wave (SAW) component(s) per se, not for applications, processes and circuits implemented within components or assemblies.
- For questions on technology, prices and delivery please contact our sales offices or email to sales@vanlong.com.

Package Dimensions (TO-39)



Electrical Connections

Terminals	Connection
1	Input/Output
2	Output/Input
3	Case Ground

Package Dimensions

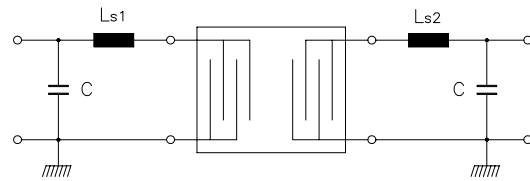
Dimensions	Nom. (mm)	Tol. (mm)
A	9.35	±0.10
B	3.40	±0.10
C	3.00	±0.20
D	0.45	±0.10
E	5.08	±0.10
F	2.54	±0.20
G	0.45	

Marking



Ink Marking
Color: Black or Blue

Test Circuit



C = 10 pF
Ls1 = Ls2 = 39 nH

Typical Frequency Response

